

# 2019 Community Resource

# JOB FAIR

**TUESDAY, JUNE 11TH**

**9am-Noon**

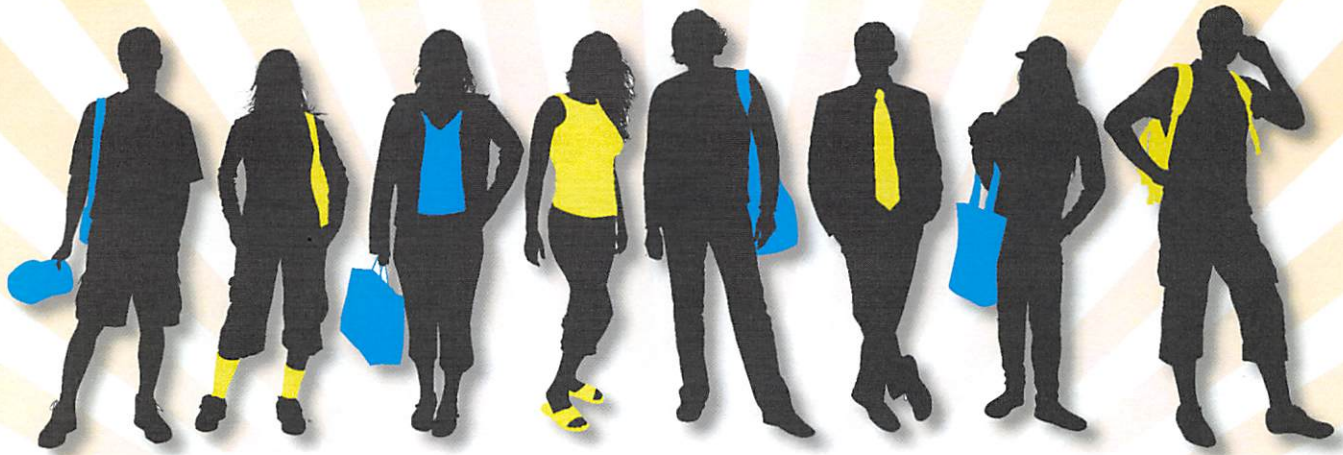
**Employment Connection  
4025 W Noble Ave Ste.B  
Visalia, CA 93277  
(559)713-5000**

**BRING COPIES OF YOUR RESUME  
AND DRESS TO IMPRESS**



**A Workforce Innovation & Opportunity Act Equal Opportunity Employer/Program**





*Are you 16-24 years old? Out of school? Unemployed?*  
**If so, Youth@Work is here to help!**

**Paid Job Placements**

**Vocational Training**

**College Assistance**

*Orientations held every Tuesday and Wednesday*

**CALL TO SCHEDULE YOUR VISIT**

**VISALIA**

Employment Connection  
4025 W. Noble Ave  
Visalia, CA 93277  
559.713.5000

**TULARE**

Family Resource Center  
304 E. Tulare Ave  
Tulare, CA 93274  
559.684.1987

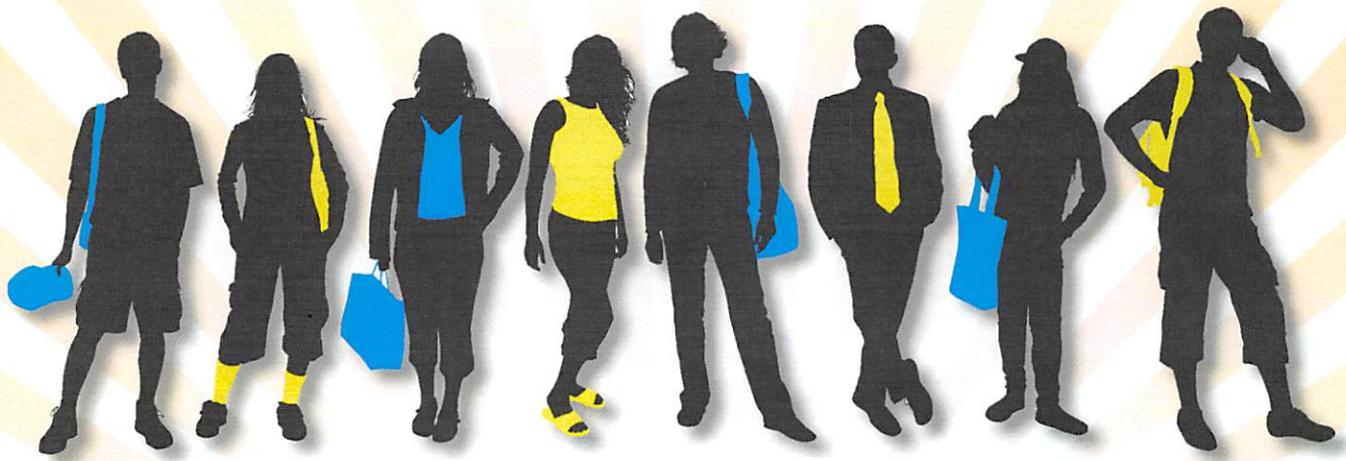
**CUTLER/OROSI**

CSET Office  
12691 Ave 408  
Cutler, CA 93615  
559.528.1095



*Program funded the Workforce Investment Board of Tulare County, an Equal Opportunity Employer Program. Auxiliary aids and services available upon request to individuals with disabilities.*





*¿Tienes 16-24 años? ¿Fuera de la escuela? ¿Desempleado?*  
**¡Si respondió que sí, entonces Youth@Work  
está aquí para ayudarte!**

**Colocaciones de Trabajo Pagadas**

**Entrenamiento Vocacional**

**Asistencia Para la Universidad**

*Orientaciones todos los Martes y Miércoles*

**LLAME PARA PROGRAMAR SU VISITA**

**VISALIA**

Employment Connection  
4025 W. Noble Ave  
Visalia, CA 93277  
559.713.5000

**TULARE**

Family Resource Center  
304 E. Tulare Ave  
Tulare, CA 93274  
559.684.1987

**CUTLER/OROSI**

CSET Office  
12691 Ave 408  
Cutler, CA 93615  
559.528.1095



*Programa financiado por el Workforce Investment Board del Condado de Tulare, un programa de igualdad de oportunidades.  
Ayudas y servicios auxiliares disponibles a pedido a personas con discapacidades.*